

Temperature control

→ is assured for all passages through a built-in sensor and an external controller ▶ accessories

Universal wall-insert

with attached stainless steel front plate
→ contains the heated passages and connecting elements

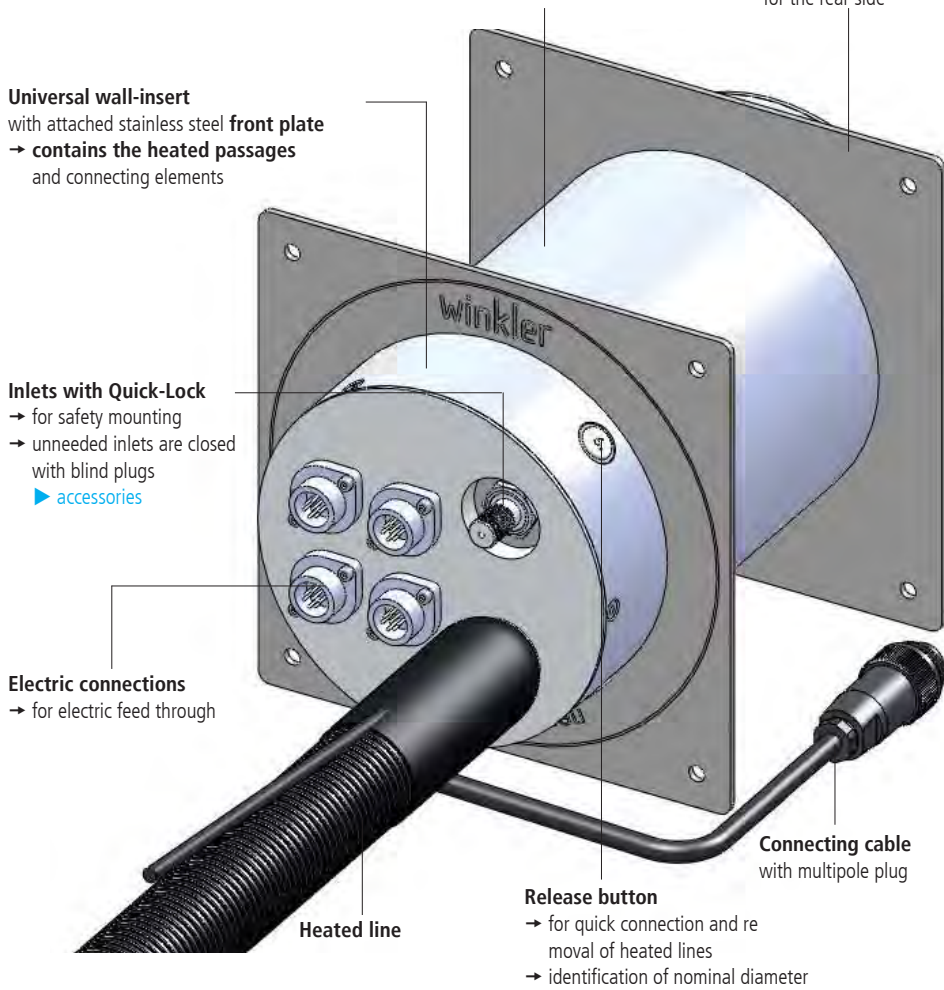
Inlets with Quick-Lock

→ for safety mounting
→ unneeded inlets are closed with blind plugs ▶ accessories

Electric connections

→ for electric feed through

Separate cover plate for the rear side



Release button

→ for quick connection and removal of heated lines
→ identification of nominal diameter

Applications

On engine test beds or roller dynamometer test beds to channel measuring gases to the analyzer-room securely and according to norms.

Benefits

- Rugged design made of high-quality materials. The system is engineered for permanent operating temperatures up to 250°C.
- Due to the design, dimensional or angular variations of the wall are compensated without compromising function.
- Easy maintenance and repair. A replacement of the slide-in module is easily and quickly done without having to open the wall-insert or damaging the wall.
- Very efficient heating and very good insulation → low power consumption of 50 W/passage (at 280 mm length).
- large variety of heated line models for the junction to the heated wall bushing
- quick and clean connection of heated lines

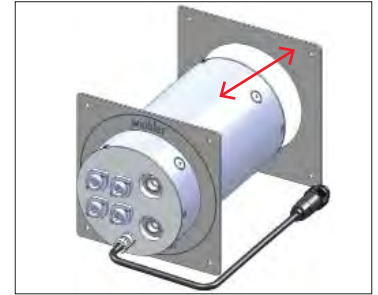
Models

- Nominal diameter (=inner diameter of the heated passages) standard DN 6 and 4, others upon request.
- Length L (corresponds to wall thickness): 200 mm, 250 mm and 300 mm (or any other according to customer specification) in addition to the overhang on both ends of 52 mm each
- Operating voltage: standard 230 VAC, other operating voltages upon request
- Sensor: standard Pt 100, Pt 1000 or thermocouples type K or type J, other sensors upon request.

Options and versions

- plugs and connectors according to customer specification
- wall bushings for water, compressed air and fluids according to customer specification upon request

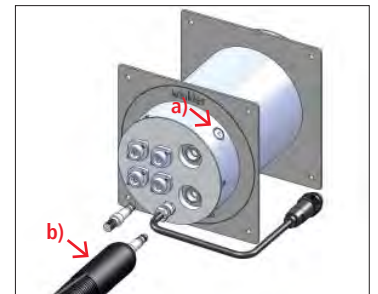
Easy installation:



1. Remove rear cover plate



2. Installation of the wall-insert in the wall



3. a) Press release button and
b) connect heated line



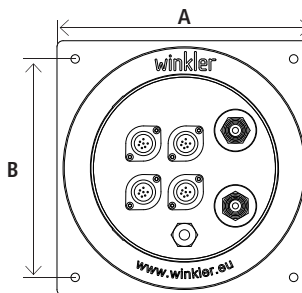
4. Unneeded inlets are closed with blind plugs

TECHNICAL DATA SERIES WAWHQL

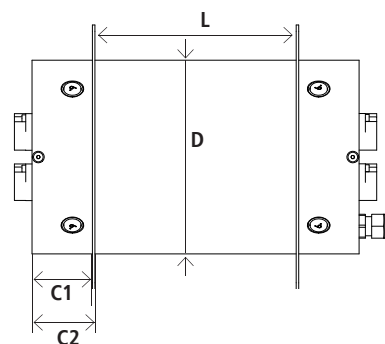
Model	WAWHQL	1-way + 2-ways heated
A: Width of plate	210 mm	
B: Hole distance	180 mm	
C1: Plate distance	49 mm	
C2: Wall distance	52 mm	
L: Length (= wall thickness)	200, 250, 300 mm or acc. to customer specification	
D: Diameter	154 mm	
Core hole bore	160 - 170 mm	



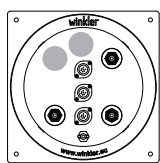
1-way heated WAWHQL



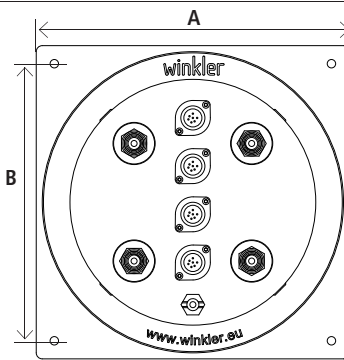
2-ways heated WAWHQL



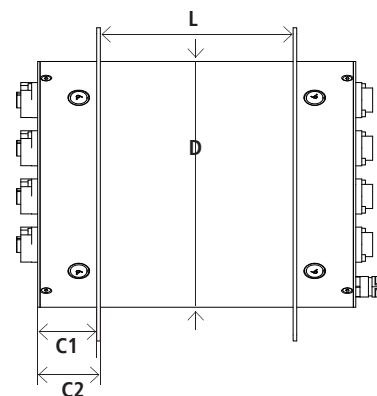
Model	WAWHQL	3-way + 3-ways heated
A: Width of plate	260 mm	
B: Hole distance	230 mm	
C1: Plate distance	49 mm	
C2: Wall distance	52 mm	
L: Length (= wall thickness)	200, 250, 300 mm or acc. to customer specification	
D: Diameter	204 mm	
Core hole bore	210 - 220 mm	



3-ways heated WAWHQL



4-ways heated WAWHQL



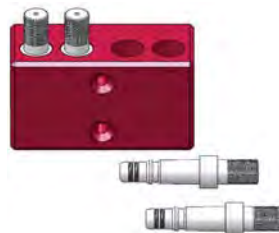
ACCESSORIES



Blind plug DN 6
Stainless steel 1.4305 with
Viton-seals
Art.-No. **WAZQLMBB**



Blind plug support 2 x
Anodized aluminium
(incl. fixation elements,
without blind plugs)



Blind plug support 4 x
Anodized aluminium
(incl. fixation elements,
without blind plugs)



Temperature controller for wall installation
Art.-No. **WRW00110-230XP000** (for sensor Pt 100)
Art.-No. **WRW00110-230XK000** (for sensor type K)
Art.-No. **WRW00110-230XJ000** (for sensor type J)

HEATED LINES WITH „QUICK-LOCK“ FITTINGS (detailed information in our catalogue „heated lines“)



G0 Polyamide (PA) braiding



G9 Stainless steel braiding



S2 Silicone skin



W2 Polyamide (PA)
corrugated hose



W9 Stainless steel spiral hose