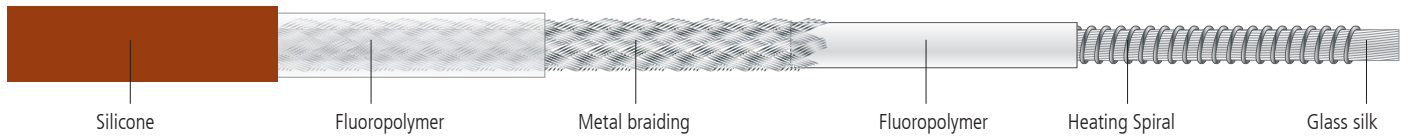


**Applications**

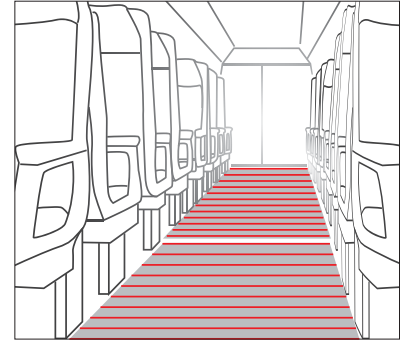
For heating, e.g., floors, wall panels, large surfaces, current collectors, pipes.  
The cable can be fitted into sections, laid along pipes or sewn onto mats.

**Structure**

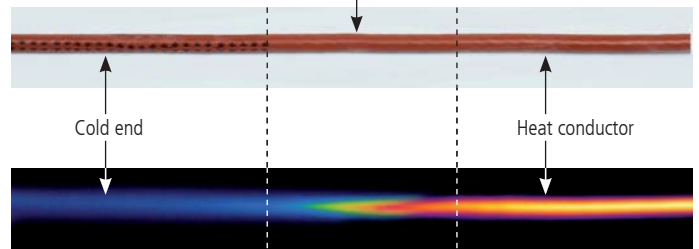


**Characteristics and advantages**

- Robust structure with high-quality insulation material
  - high resistance against mechanical and thermal influences
- Spiralled heat conductor
  - no longitudinal expansion during heating process
  - greater flexibility
  - safety against breakage
- „Seamless Technology“ connection between cold end and heat conductor
  - ideal electrical connection without risk of interruption, loose contacts or contact resistance
  - no risk of moisture penetration
  - unchanging cross-section without thickening at the transition between cold end and heat conductor
- Wide range of resistance values available
  - customized design of voltage, power and length

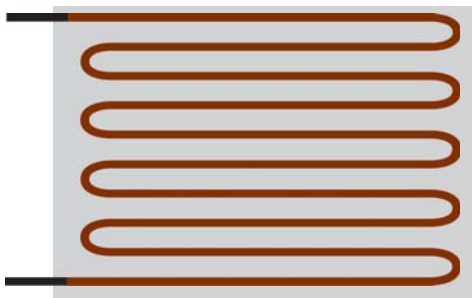
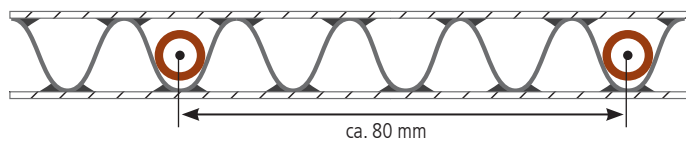


**Seamless Technology**

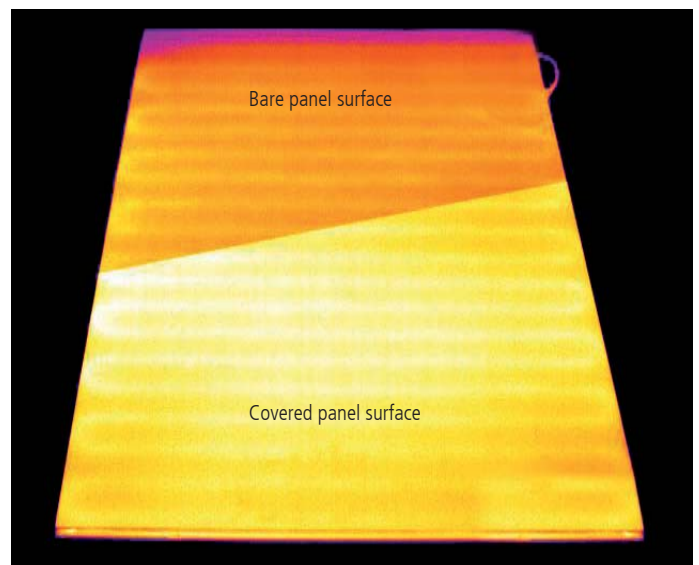


Thermographic camera image

**Installation example: Aluminium sandwich panel of Metawell GmbH**



**Vibration tested in accordance to EN61373**



Thermographic camera image

$\varnothing = \text{ca. } 5 \text{ mm}$ 
 $L_{\text{max}} = 50 \text{ m}$   
 $L_{\text{min}} = 1 \text{ m}$ 
 $50 \text{ g/m}$ 
 $U_{\text{max}} = 500 \text{ V}$ 
 $P_{\text{max}} = 50 \text{ W/m}$ 
 $T_{\text{max}} = 150 \text{ }^\circ\text{C}$ 
 $R_{\text{min}} = 25 \text{ mm}$